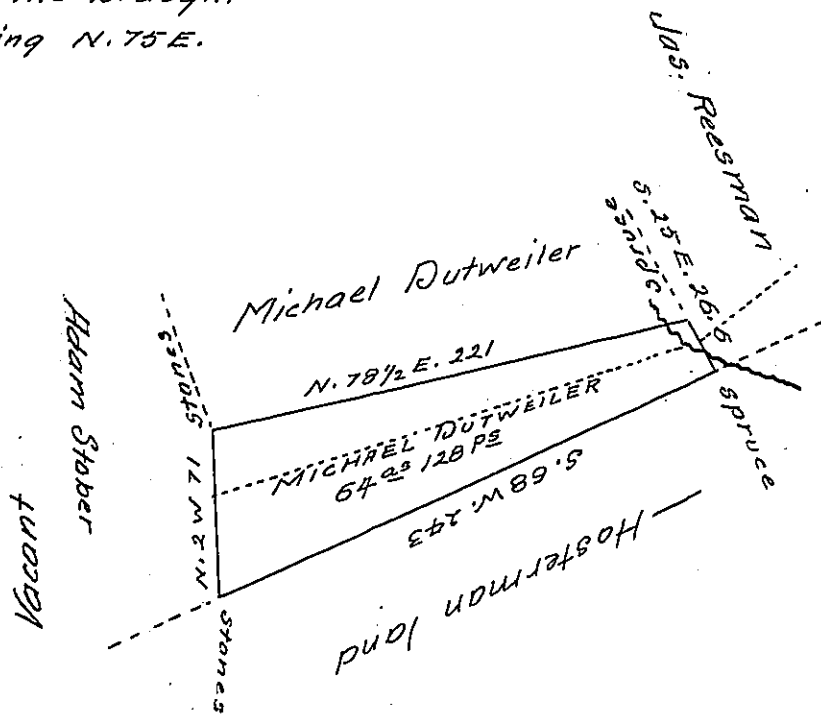


Note the dots in the Draught  
shew a line bearing N. 75 E.



The Draught of a tract of land situate in <sup>103</sup>Haves Township Centre  
 County containing Sixty four Acres one hundred and twenty eigh-  
 ht perches and allowance of Six per Cent for roads &c. Surveyed  
 the 17<sup>th</sup> day of June 1817, In pursuance of a warrant granted to  
 Michael Dubweiler dated the 27<sup>th</sup> day of January 1817.

Wm Kerr D.S.

To Richard T. Leech Esquire

Surveyor General of Pennsylvania



IN TESTIMONY that the above is a copy of the original remaining on file in  
 the Department of Internal Affairs of Pennsylvania, made  
 conformably to an Act of Assembly approved the 16th day of  
 February, 1833, I have hereunto set my Hand and caused  
 the Seal of said Department to be affixed at Harrisburg,  
 this fifteenth day of July 1904.

*James P. Brown*  
 Secretary of Internal Affairs.